

## **VERMONT EMERGENCY MANAGEMENT AND REGIONAL PLANNING COMMISSIONS**

**February 15, 2019, House Government Operations Committee**

### **Overview**

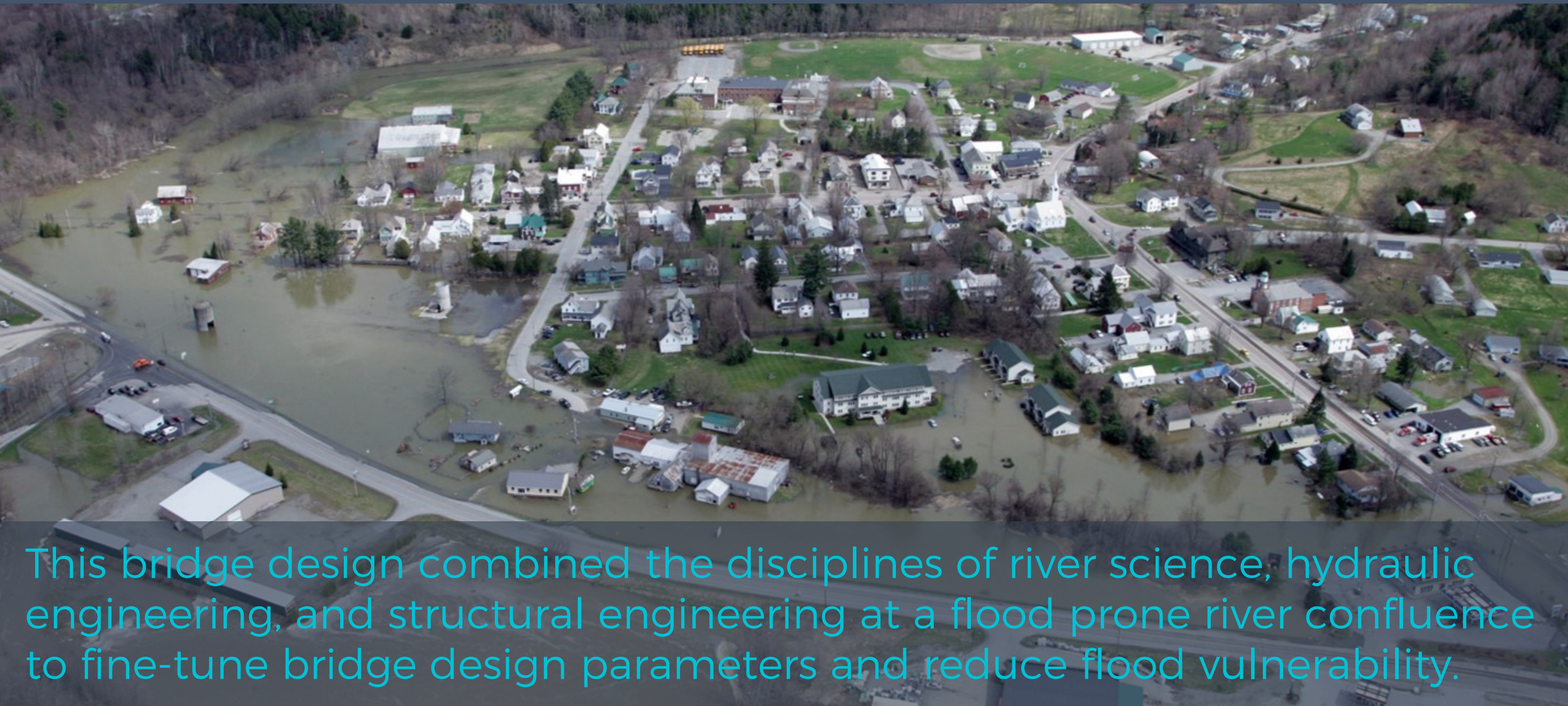
- VEM's long-standing partnership with Regional Planning Commissions (RPCs) helps VEM meet its requirements and fill gaps in preparedness, response, recovery, and mitigation. RPCs provide a critical link between VEM and municipalities, serving as a source of local information, assisting with outreach, and helping build an ever-stronger cadre of Emergency Management Directors (EMDs) in each of Vermont's cities and towns.
- In many cases, the success of VEM activities depends on the engagement of RPCs—through facilitating and encouraging participation in VEM trainings and exercises, providing feedback on Local Emergency Operations Plans (LEOPs) to ensure that key information is included, and helping towns complete Local Hazard Mitigation Plans (LHMPs), among others. With 251 towns in Vermont, this level of local engagement could not be replicated by VEM staff alone.
- In FFY17, VEM provided \$549,966 in sub-awards to RPCs under the Emergency Management Performance Grant (EMPG)—an average of nearly \$50,000 per each of the 11 RPCs. This is matched 1:1 with local and regional investment.

### **Highlights of the VEM – RPC Partnership, 2017/18**

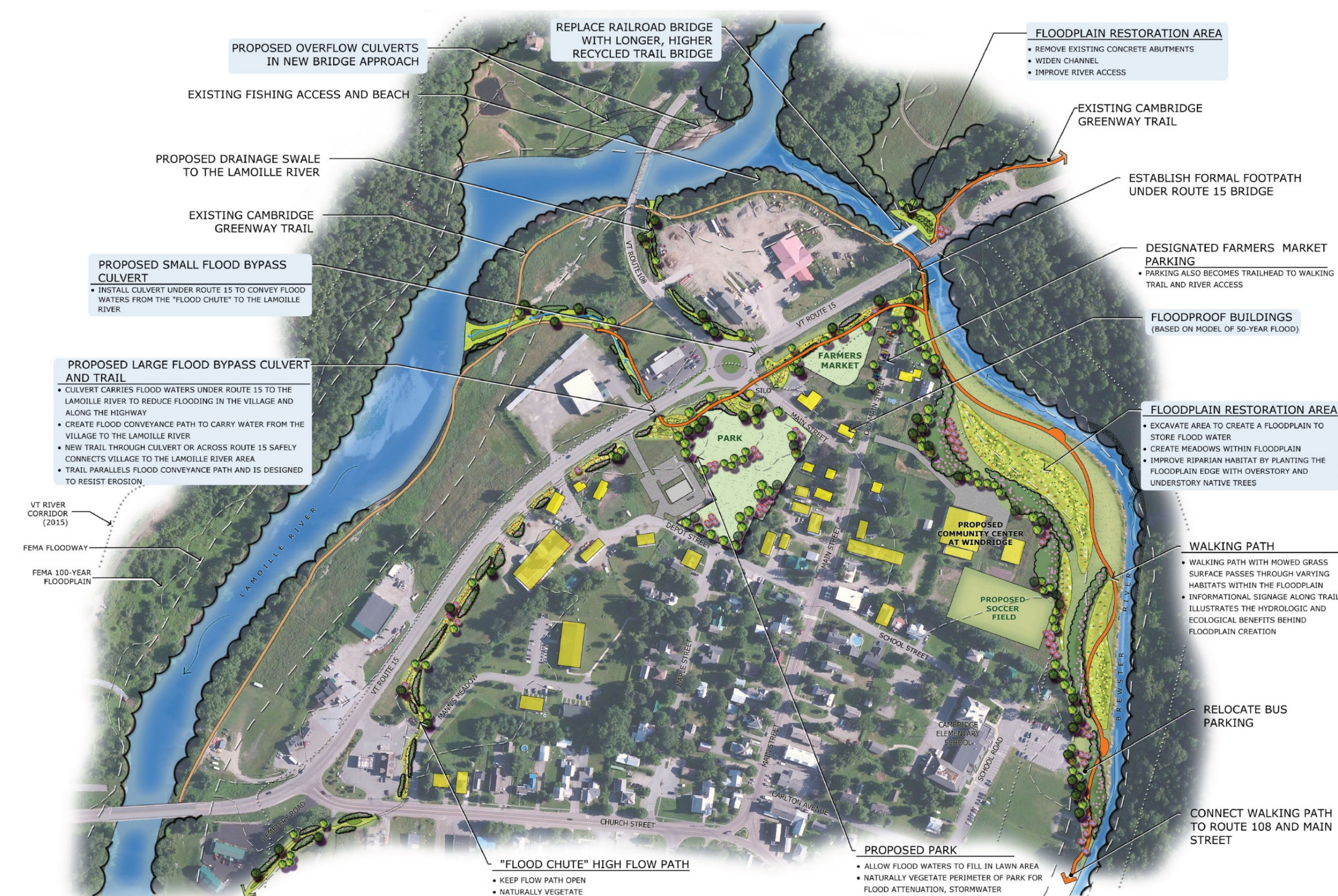
- RPCs helped 197 municipalities complete Local Emergency Operations Plans.
- RPCs partnered with VEM and others on 57 trainings and 12 exercises.
- RPCs have 40 staff members trained and available to serve in various positions within the State Emergency Operations Center.
- In the past year, the RPCs were activated as Local Liaisons for three events, including two that resulted in Federal Disaster Declarations.
- VEM sub-granted funds to RPCs to complete 102 Local Hazard Mitigation Plans (LHMPs) across the state, covering 40 percent of the state's communities.
- RPCs provided technical assistance to approximately 100 municipalities to ensure compliance with the National Flood Insurance Program.

# CAMBRIDGE GREENWAY TRAIL / RAILROAD BRIDGE REPLACEMENT

JEFFERSONVILLE FLOOD MITIGATION PROJECT  
TOWN OF CAMBRIDGE & LAMOILLE COUNTY PLANNING COMMISSION



This bridge design combined the disciplines of river science, hydraulic engineering, and structural engineering at a flood prone river confluence to fine-tune bridge design parameters and reduce flood vulnerability.



The former railroad bridge that carries the Cambridge Greenway Trail over the Brewster River in Jeffersonville, Vermont was replaced in fall of 2017 to reduce flooding in the Village.

Jeffersonville regularly experiences flood damage to infrastructure and private property. The most recent damaging flood took place in spring 2011 where water hit the side of the former bridge; overtopped Routes 15 and 108; and damaged residences and businesses (shown above). This flood mitigation project is the first of four strategies identified in a previous flood hazard engineering alternatives analysis and flood hazard mitigation planning.

A *Flood Mitigation Master Plan* was created to show the preferred alternatives identified in the analysis and selected by the community; the recreation co-benefits; and how the selected alternatives fit. Project benefits include reducing flooding in the Village, improved aquatic habitat, increased wildlife passage and enhanced community recreation.

April 15, 2014  
Pre-Construction Flooding



- Floodwaters from the Brewster River are backed up into the Village when they are slowed after hitting the bridge and the Lamoille River confluence.
- Complex flood patterns were simulated using hydraulic modeling including flows splitting from the Brewster River and traveling through the Village and multiple paths to the Lamoille River.

May 2015  
Public Outreach



Artistic renderings were created to assist the community visualize projects and to support grant funding applications.

August 23, 2017  
Start of Construction



December 5, 2017  
Post-Construction



January 12, 2018  
Post-Construction Flooding



Flood flows and river ice spilled onto the restored floodplain in January of 2018 likely reducing flooding in the Village. Animal tracks were seen on the new floodplain indicating Improved wildlife connection.

MILONE & MACBROOM



Welcome to  
CAMBRIDGE  
VERMONT

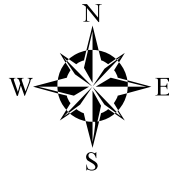
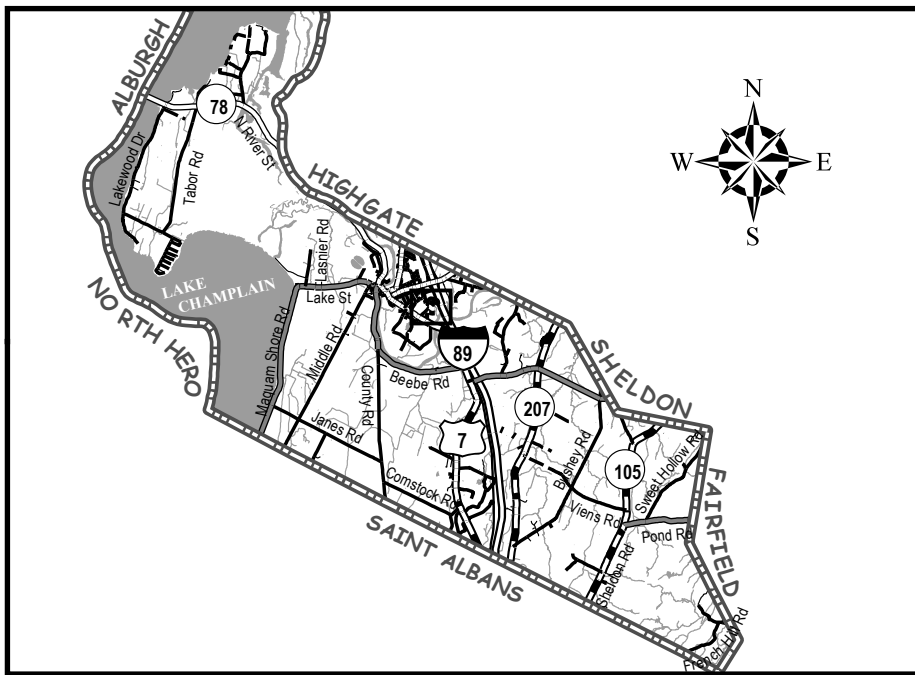
American Council of  
Engineering Companies  
Vermont Section  
2018 Engineering Excellence  
Awards  
Entry Category B:  
Transportation

LEGEND  
PROPOSED TRAIL  
EXISTING TRAIL  
FLOOD MITIGATION RECOMMENDATIONS  
FLOODPLAIN RESTORATION

FLOOD MITIGATION MASTER PLAN  
JEFFERSONVILLE, VERMONT  
APRIL 2015  
THIS PROJECT WAS FUNDED THROUGH A MUNICIPAL PLANNING GRANT AWARDED BY THE AGENCY OF COURTESY AND COMMUNITY DEVELOPMENT

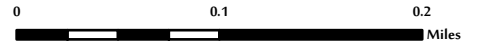


# ABENAKI ACRES



## LEGEND

- |                      |                             |
|----------------------|-----------------------------|
| ■ Residential/Camp   | ==== Interstate Highway     |
| ☆ Public             | == State or Federal Highway |
| ○ Commercial         | — Class 1 Town Highway      |
| △ Industrial/Utility | — Class 2 Town Highway      |
| □ Gated              | — Class 3 Town Highway      |
| ? Unknown            | --- Class 4 Town Highway    |
| ▬ Abenaki Acres      | ⋯ State Forest Highway      |
| ▬ Town Boundary      | — Private Road              |
| ■ Surface Water      | ⋯ Legal Trail               |
|                      | ⋯ Driveway                  |



DISCLAIMER: Site addresses may not correspond to the official VT Enhanced 911 addressing system. For planning purposes only.